



Exporter from china

QUICK CHANGE TOOL POSTS (USA STYLE)

- The quick change tool post is a major spare part of the ordinary lathes. It is composed of the cutter^acartridge body and the tool^aholder for various cutting tools which can replace the square tools table for processing works like cylindrical facing, end facing, cutting, knurling, drilling, enlarging boring and reaming, etc. The height of tools can be regulated and positioned relative to the centerline of machine spindle. It features external tool^amounting, tool^amatching, quick tool^achanging (with 3 to 5 seconds), great precision in positioning and great hardness etc..

Piston Type Tool Post Sets (6-Piece Sets)

MODEL NO.	Lathe swing (in.)	EACH SET INCLUDES
251-100	12	Each 1pc of 250-100, 250-101, 250-102, 250-104, 250-107, 250-110
251-200	10-15	Each 1 pc of 250-200, 250-201, 250-202, 250-204, 250-207, 250-210
251-300	13-18	Each 1pc of 250-300, 250-301, 250-302, 250-304, 250-307, 250-310
251-400	14-20	Each 1 pc of 250-400, 250-401, 250-402, 250-404, 250-407, 250-410

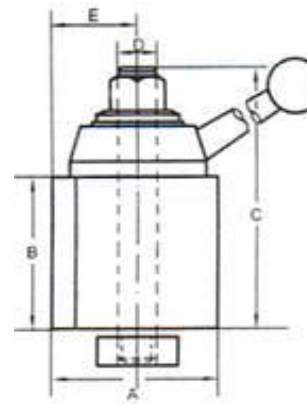
Wedge Type Tool Post Sets (6-Piece Sets)

MODEL NO.	Lathe swing (in.)	EACH SET INCLUDES
251-100	12	Each 1 pc of 250-111, 250-101, 250-102, 250-104, 250-107, 250-110
251-200	10-15	Each 1 pc of 250-222, 250-201, 250-202, 250-204, 250-207, 250-210
251-300	13-18	Each 1 pc of 250-333, 250-301, 250-302, 250-304, 250-307, 250-310
251-400	14-20	Each 1 pc of 250-444, 250-401, 250-402, 250-404, 250-407, 250-410
251-555	17-48	Each 1 pc of 250-555, 250-501> 250-502, 250-504, 250-507, 250-510



PISTON QUICK CHANGE TOOL POST

Specification	lathe swing		A		B		C		D	E		Holder Code
	Model	inch	mm	inch	mm	inch	mm	inch		mm	inch	
250-100	12	304	2½	63.5	2¼	57.15	3¾	95.25	M14x1.5	17/16	36.512	250-1xx
250-200	10-15	254-381	3	76.2	2	69.85	4•	111.125	M16x1.5	1•	41.275	250-2xx
250-300	13-18	330-457	3•	85.725	3¾	76.2	4•	123.825	M20x2	1•	47.625	250-3xx
250-400	14-20	355-508	4	101.6	3•	92.075	6	152.4	M22x2	2•	53.975	250-4xx

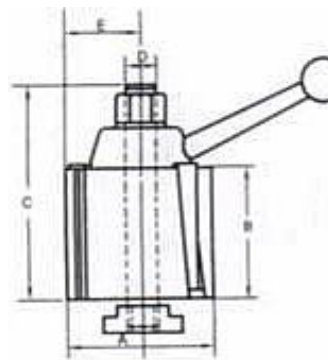


ii

ii

WEDGE QUICK CHANGE TOOL POST

Specification	lathe swing		A		B		C		D	E		Holder Code
	Model	inch	mm	inch	mm	inch	mm	inch		mm	inch	
250-111	12	304	2½	63.5	2¼	57.15	3¾	95.25	M14x1.5	1•	34.925	250-1xx
250-222	10-15	254-381	3	76.2	2¼	69.85	4•	111.125	M16x1.5	19/16	39.68	250-2xx
250-333	13-18	330-457	3½	88.9	3	76.2	4•	123.83	M20x2	129/32	48.42	250-3xx
250-444	14-20	355-508	4	101.6	3•	92.075	6	152.4	M22x2	2•	53.975	250-4xx
250-555	17-48	432-1219	5	127	4•	117.47	7•	187.32	M24x2	211/16	68.26	250-5xx



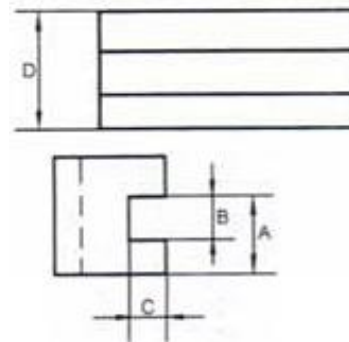
ii

ii

01# TURNING AND FACING HOLDER

ii Take various sizes of bits. Turning and facing tools can be locked together

Model	250-101		250-201		250-301		205-401		250-501	
Specification	inch	mm	inch	mm	inch	mm	inch	mm	inch	mm
A	15/16	23.81	1•	28.57	17/16	36.51	111/16	42.86	33/16	55.56
B	1/2	12.7	5/8	15.87	3/4	19.05	1	25.4	1¼	31.75
C	7/16	11.11	1/2	12.7	5/8	15.87	3/4	19.05	1	25.4
D	1½	38.1	1¾	44.45	2•	53.97	2½	63.5	3•	79.37



ii

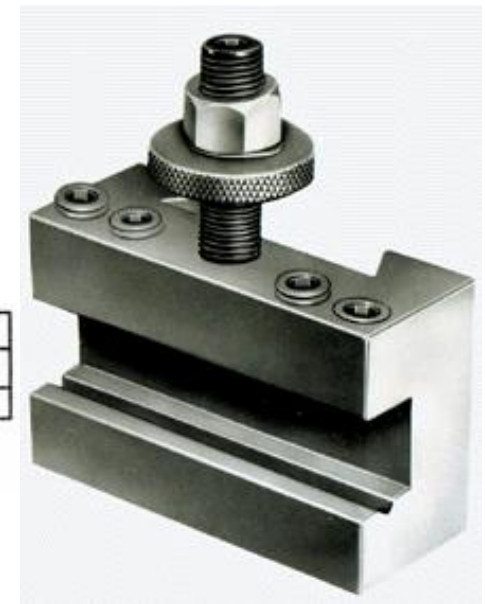
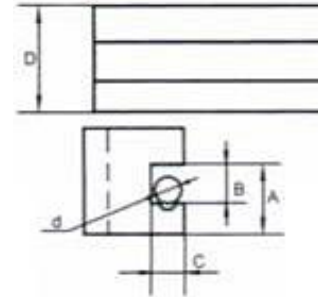
ii

02# BORING, TURNING AND FACING HOLDER

ii "V" groove holds round shank boring bars and tools as well as square tool bits

ii

Model	250-102		250-202		250-302		205-402		250-502	
Specification	inch	mm	inch	mm	inch	mm	inch	mm	inch	mm
A	15/16	23.81	1•	28.57	17/16	36.51	111/16	42.86	33/16	55.56
B	1/2	12.7	5/8	15.87	3/4	19.05	1	25.4	1¼	31.75
C	7/16	11.11	1/2	12.7	5/8	15.87	3/4	19.05	1	25.4
D	1½	38.1	1¾	44.45	2•	53.97	2½	63.5	3•	79.37
d	7/16	11.11	1/2	12.7	5/8	15.87	3/4	19.05	1•	28.57

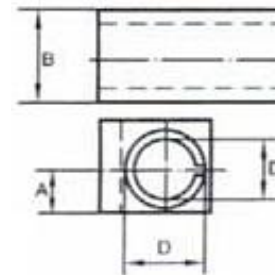


04# HEAVY DUTY BORING BAR HOLDER

Equipped with a split bushing to accommodate a boring bar of smaller diameter. It permits drilling and boring, etc.

Model	250-104		250-204		250-304		205-404		250-505	
Specification	inch	mm	inch	mm	inch	mm	inch	mm	inch	mm
A	3/4	19.05	7/8	22.22	1	25.4	1¼	31.75	19/16	39.68
B	1½	38.01	1¾	44.45	2	50.8	2½	63.5	3•	79.37
D	3/4	19.05	1	25.4	1	25.4	1¼	31.75	1½	38.1
D1	5/8	15.87	3/4	19.05	3/4	19.05	1	25.4	1¼	31.75

Model	250-141		250-241		250-341		205-441	
Specification	inch	mm	inch	mm	inch	mm	inch	mm
A	7/8	22.22	1	25.4	1•	28.57	1•	28.75
B	1¾	44.45	2	50.8	2¼	57.15	2¾	57.15
D	1	25.4	1¼	31.75	1¼	31.75	1½	31.75
D1	3/4	19.05	1	25.4	1	25.4	1¼	25.4



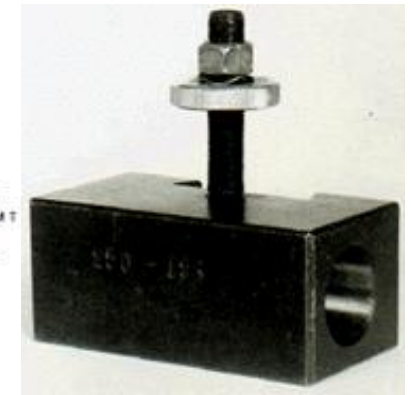
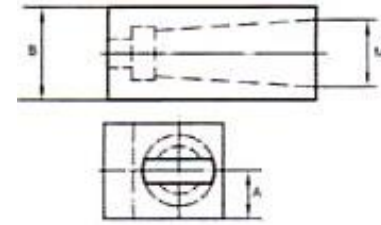
05# MORSE TAPER HOLDER FOR DRILLING

Drills with carriage by using power feed instead of tail-stock. It permits driving, boring, and reaming, etc.

Model	250-105		250-205		250-305		205-405	
Specification	inch	mm	inch	mm	inch	mm	inch	mm
A	3/4	19.5	7/8	22.225	1	25.4	1¼	31.75
B	1½	38.1	1¾	44.45	2	50.8	2½	63.5
M.T	2"		2"		3"		3"	

Model	250-153		250-253		250-353		205-453	
Specification	inch	mm	inch	mm	inch	mm	inch	mm
A	3/4	19.05	7/8	22.22	1 ¹ / ₁₆	26.98	1 ³ / ₁₆	30.16
B	1 ¹ / ₂	38.1	1 ³ / ₄	44.45	2•	53.97	2•	60.32
M.T	3"		3"		4"		4"	

ii



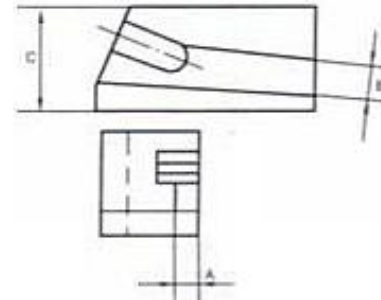
ii

7# UNIVERSAL PARTING BLADE TOOL HOLDER

ii Equipped with T-cut blades. Enable you to cut off close to chuck.

Model	250-107		250-207		250-307		205-407		250-507	
Specification	inch	mm	inch	mm	inch	mm	inch	mm	inch	mm
A	3/16	4.76	3/16	4.76	3/16	4.76	1/4	6.35	1/4	6.35
B	1/2	12.7	11/16	17.46	3/4	19.05	7/8	22.23	1 ³ / ₁₆	30.16
D	1 ¹ / ₂	38.1	1 ³ / ₄	44.45	2	50.8	2 ¹ / ₂	63.5	2 ³ / ₄	69.85

ii



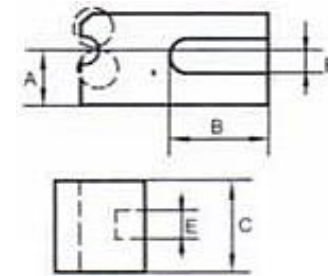
ii

10# KNURLING, TURNING & FACING HOLDER

ii Equipped with knurls and square tools, enable you to knurl, face bore, etc.

Model	250-110		250-210		250-310		205-410		250-510	
Specification	inch	mm	inch	mm	inch	mm	inch	mm	inch	mm
A	7/8	22.22	1	25.4	1 ³ / ₁₆	30.16	1 ⁷ / ₁₆	36.51	1•	47.62
B	2 ¹ / ₂	63.5	2•	66.67	3•	79.37	3 ³ / ₄	95.25	4 ¹ / ₂	114.3
C	1 ⁹ / ₁₆	39.68	1 ³ / ₄	44.45	2	50.8	2 ¹ / ₂	63.5	3•	79.37
E	1/2	12.7	5/8	15.87	3/4	19.05	1	25.4	1 ¹ / ₄	31.75
E1	3/8	9.53	1/2	12.7	1/2	12.7	3/4	19.05	1	25.4

ii



ii

ii ii

ii

ii