

# POLYTOP

Exporter from china

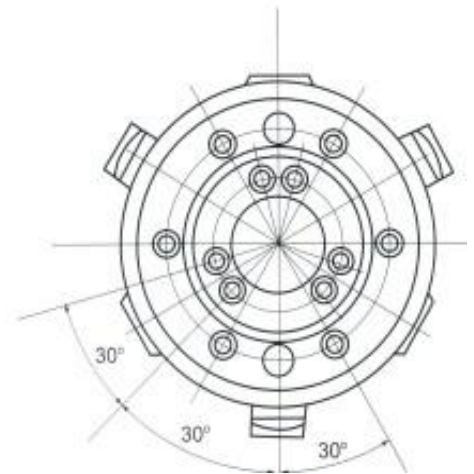
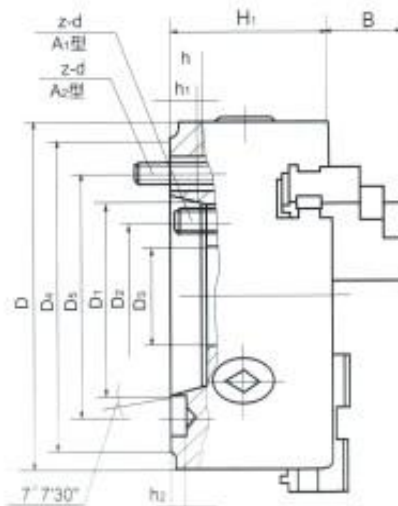
## PTK11-A SERIES DIRECT MOUNTING 3-JAW SELF-CENTERING CHUCKS:



This series of chucks are of the short cone type and can be directly connected to the spindle noses of the machine tools.

The chuck mounting types are classified as type A<sub>1</sub> and A<sub>2</sub> and C and D which can be separately fitted onto NO.3, 4, 5, 6, 8, 11, and 15 spindle noses. The connecting dimensions conform to GB5900.1-GB5900.3(ISO-702) standards. The same with the PTK11 series 3-jaw self-centering chucks, PTK11-A are classified as solid jaws, two-piece jaws for Form A and Form C jaws can be interchanged for chucks of the same size and the same jaws s Form.

### 1. Form A: Mounting Front



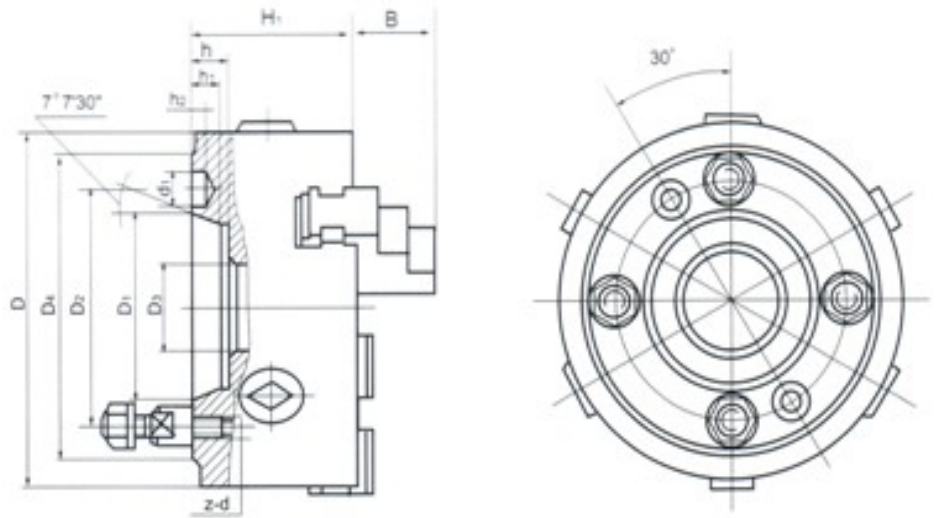
### (1). Form A<sub>1</sub>: Use Inner Tapped Holes

Model	D	D <sub>1</sub>	D <sub>2</sub>	D <sub>3</sub>	D <sub>4</sub>	D <sub>5</sub>	H <sub>1</sub>	h	h <sub>1</sub>	h <sub>2</sub>	d <sub>1</sub>	z-d
PTK11200/A <sub>1</sub> 5 PTK11200A/A <sub>1</sub> 5	200	82.563	61.9	40	133	104.8	84	14.288	12	6.5	16.3	3-M10
PTK11250/A <sub>1</sub> 5 PTK11250A/A <sub>1</sub> 5	250	82.563	61.9	40	133	104.8	93	14.288	12	6.5	16.3	3-M10
PTK11200/A <sub>1</sub> 6 PTK11200A/A <sub>1</sub> 6		106.375	82.6	55	165	133.4	93	15.875	13	6.5	19.5	6-M12

### (1). Form A<sub>2</sub>: Use Outer Tapped Holes

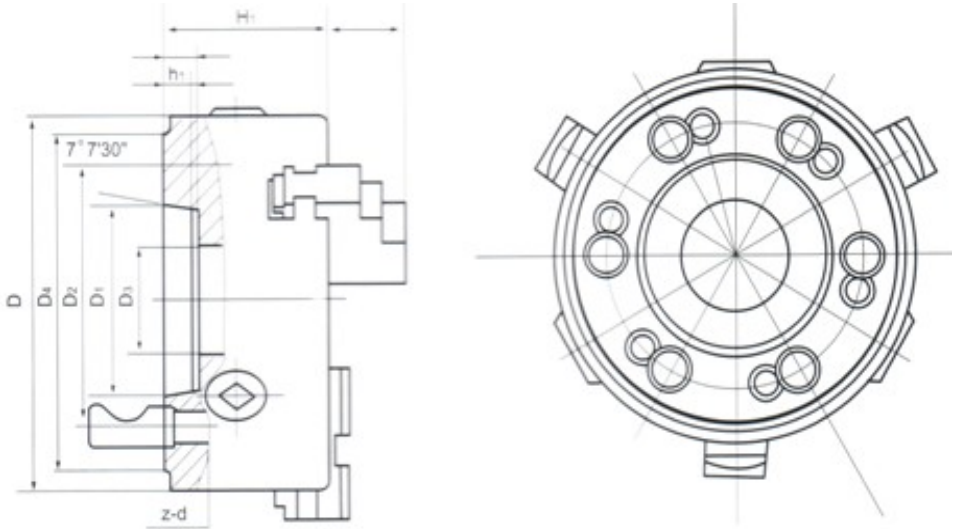
Model	D	D <sub>1</sub>	D <sub>3</sub>	D <sub>4</sub>	D <sub>5</sub>	H <sub>1</sub>	h	h <sub>1</sub>	h <sub>2</sub>	d <sub>1</sub>	z-d
PTK11200/A <sub>2</sub> 4 PTK11200A/A <sub>2</sub> 4	200	63.513	60	108	82.6	86	--	10	6.5	14.7	3-M10

## 2. Form C : Mounting with Studs and locknuts



Model	D	D <sub>1</sub>	D <sub>2</sub>	D <sub>3</sub>	D <sub>4</sub>	H <sub>1</sub>	h	h <sub>1</sub>	h <sub>2</sub>	d <sub>1</sub>	z-d
PTK11125/C3	125	53.975	75	25	102	63	13	10	--	--	3-M10
PTK11125/C4		63.513	85	25	112	63	13	10	6.5	14.7	3-M10
PTK11160/C3 PTK11160A/C3 PTK11160C/C3	160	53.975	75	40	102	76	13	10	--	--	3-M10
PTK11160/C4 PTK11160A/C4 PTK11160C/C4		63.513	85	40	112	70	13	10	6.5	14.7	3-M10
PTK11160/C5 PTK11160A/C5 PTK11160C/C5		82.563	104.8	40	135	73	15	12	6.5	16.3	4-M10
PTK11200/C4 PTK11200A/C4 PTK11200C/C4	200	63.513	85	50	112	84	13	10	6.5	14.7	3-M10
PTK11200/C5 PTK11200A/C5 PTK11200C/C5		82.563	104.8	50	135	84	15	12	6.5	16.3	4-M10
PTK11200/C6 PTK11200A/C6 PTK11200C/C6		106.375	133.4	50	170	84	16	13	6.5	19.5	4-M12
PTK11250/C5 PTK11250A/C5 PTK11250C/C5	250	82.563	104.8	70	135	95	15	12	6.5	16.3	4-M10
PTK11250/C6 PTK11250A/C6 PTK11250C/C6		106.375	133.4	70	170	95	16	13	6.5	19.5	4-M12
PTK11250/C8 PTK11250A/C8 PTK11250C/C8		139.719	171.4	80	220	95	18	14	8	24.2	4-M16
PTK11320C/C6 PTK11320A/C6	320	106.375	133.4	100	170	103.5	16	13	6.5	19.5	4-M12
PTK11320C/C8 PTK11320A/C8		139.719	171	100	220	106	18	14	8	24.2	4-M16
PTK11320C/C11 PTK11320A/C11		196.869	235	100	290	103.5	20	16	10	29.4	6-M20
PTK11400C/C11	400	196.869	235	130	290	120	20	16	10	29.4	6-M20
PTK11500C/C11	500	196.869	235	200	290	135	20	16	10	29.4	6-M20

### 3. Form D : Mounting with Studs and Camlocks



Model		D	D <sub>1</sub>	D <sub>2</sub>	D <sub>3</sub>	D <sub>4</sub>	H <sub>1</sub>	h	h <sub>1</sub>	z-d
PTK11125/D3		125	53.975	70.6	25	92	63	13	10	3-M10 <sub>j</sub> Á1
PTK11125/D4			63.513	82.6	25	117	63	13	10	3-M10 <sub>j</sub> Á1
PTK11160/D3	PTK11160A/C3 PTK11160C/C3	160	53.975	70.6	40	92	76	13	10	3-M10 <sub>j</sub> Á1
PTK11160/D4	PTK11160A/C4 PTK11160C/C4		63.513	82.6	40	117	70	13	10	3-M10 <sub>j</sub> Á1
PTK11160/D5	PTK11160A/C5 PTK11160C/C5		82.563	104.8	40	146	73	15	12	6-M12 <sub>j</sub> Á1
PTK11200/D4	PTK11200A/C4 PTK11200C/C4	200	63.513	82.6	50	117	86	13	10	3-M10 <sub>j</sub> Á1
PTK11200/D5	PTK11200A/C5 PTK11200C/C5		82.563	104.8	50	146	86	15	12	6-M12 <sub>j</sub> Á1
PTK11200/D6	PTK11200A/C6 PTK11200C/C6		106.375	133.4	50	181	86	16	13	6-M16 <sub>j</sub> Á1.5
PTK11250/D5	PTK11250A/C5 PTK11250C/C5	250	82.563	104.8	70	146	95	15	12	6-M12 <sub>j</sub> Á1
PTK11250/D6	PTK11250A/C6 PTK11250C/C6		106.375	133.4	70	181	98	16	13	6-M16 <sub>j</sub> Á1.5
PTK11250/D8	PTK11250A/C8 PTK11250C/C8		139.719	171.4	80	225	98	18	14	6-M20 <sub>j</sub> Á1.5
PTK11320C/D6	PTK11320A/D6	320	106.375	133.4	100	181	103.5	16	13	6-M16 <sub>j</sub> Á1.5
PTK11320C/D8	PTK11320A/D8		139.719	171.4	100	225	103.5	18	14	6-M20 <sub>j</sub> Á1.5
PTK11320C/D11	PTK11320A/D11		196.869	235	100	298	103.5	20	16	6-M22 <sub>j</sub> Á1.5
		ii	ii	ii	ii	ii	ii	ii	ii	ii